

AKRAS R2

The New Standard in Pod Height.

- Exceptional combination of yield, maturity and dependable performance
- Widely adapted to provide high yield potential throughout early and mid-season maturity zones
- Very high first pod
- Widely adapted to perform well in both early and mid-season zones

Features

Maturity:	2375 CHU 00.3 Relative Maturity
Hilum:	Imperfect black
Plant/canopy type:	Semi-bushy
Plant height:	Medium
Standability:	9
Seedling vigour:	8
Pubescence:	Grey
Flower:	Purple
IDC:	Tolerant
PRR:	VG field resistance (Rps1k gene)
White mould:	8
Pod height:	9

Non-disease ratings: 9=Excellent 5=Average 1=Poor
IDC: Iron deficiency chlorosis; PRR: Phytophthora root rot;
White mould: Sclerotinia rot or white mould



See reverse for technical details and find us online at:

brettyoung.ca/akras



Developed By

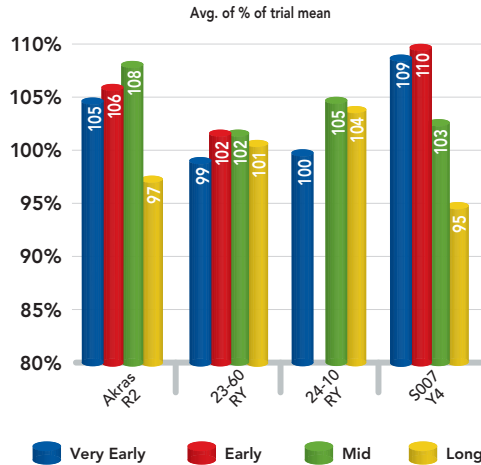


BrettYoung™
DISTINCT BY DESIGN

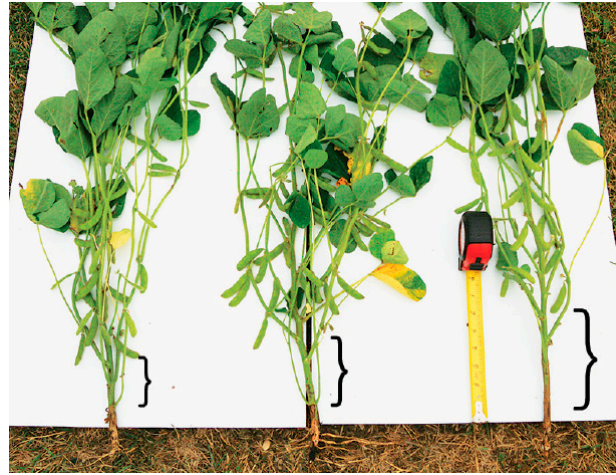


SOYBEAN

Performance in Trials¹



¹ Data from 2015 and 2016 Manitoba Crop Variety Evaluation Trials and Western Soybean Adaptation Trials. Yield as % of trial mean, grouped by average CHU for site.



Akra's R2 (right), showcasing pod height against Pekko R2 (centre) and S007-Y4 (left).

Our Strategic Partner for Soybeans

The strategic partnership between BrettYoung and Elite[®] brings premium soybean varieties specifically suited to Western Canadian conditions.

Elite is a Canadian seed company that prides itself on delivering varieties tailored to the specific needs of farmers across Western Canada. Elite's unwavering commitment to early-maturing markets is demonstrated through continued investments in crop production research, plant breeding and crop variety development.

Elite has a full soybean breeding program with their own proprietary genetic material that is dedicated to delivering soybeans with a maturity and performance profile to satisfy all Prairie soybean product areas. The expansion of Prairie acres has driven Elite's investment into crosses directed towards early zone adaptation, additional private testing, disease screening sites and more nursery selection plots. Elite's inclusion of pod height in their selection process has led to varieties with superior harvestability vs. competing products.

When farmers choose Elite, they are choosing cutting-edge products and technology along with industry-leading expertise.

Distinct By Design

At BrettYoung, we strive to be a company like no other. We are proud of our strategic partnerships with world-class organizations through which we source leading technologies and genetics.

We succeed in our markets by bringing distinct choices that deliver performance and value. By design, our success is deeply rooted within your success; the two are intertwined and grow together. We are **Distinct By Design** and we wouldn't have it any other way.

For more information visit brettyoung.ca or call toll-free at 1-800-665-5015.

Developed By



BrettYoung™ is a trademark of Brett-Young Seeds Limited. Elite® is a registered trademark (owned by La Coop fédérée).

Monsanto Company is a member of Excellence Through Stewardship® (ETS). Monsanto products are commercialized in accordance with ETS Product Launch Stewardship Guidance, and in compliance with Monsanto's Policy for Commercialization of Biotechnology-Derived Plant Products in Commodity Crops. These products have been approved for import into key export markets with functioning regulatory systems. Any crop or material produced from these products can only be exported to, or used, processed or sold in countries where all necessary regulatory approvals have been granted. It is a violation of national and international law to move material containing biotech traits across boundaries into nations where import is not permitted. Growers should talk to their grain handler or product purchaser to confirm their buying position for these products. Excellence Through Stewardship® is a registered trademark of Excellence Through Stewardship.

ALWAYS READ AND FOLLOW PESTICIDE LABEL DIRECTIONS. Roundup Ready® technology contains genes that confer tolerance to glyphosate, an active ingredient in Roundup® brand agricultural herbicides. Agricultural herbicides containing glyphosate will kill crops that are not tolerant to glyphosate. Genuity®, Roundup Ready® and Roundup® are registered trademarks of Monsanto Technology LLC, Monsanto Canada Inc. licensee.

All other trademarks are property of their respective companies. 10.17